

InfoAnneArundel®

Connecting People to Resources in Anne Arundel County, Maryland

infoAnneArundel is collaborative effort of public and private agencies to provide detailed information about health, education and human service resources throughout Anne Arundel County, MD. It is our goal to link individuals and families with services that can help. Visit www.infoannearundel.org.

Dedicated Partners & Steering Committee Members

- Anne Arundel County Partnership for Children, Youth and Families
- Anne Arundel County Public Schools
- Anne Arundel Government - Office of Minority Affairs
- Anne Arundel County Health Department
- Anne Arundel County Department of Recreation and Parks
- Anne Arundel County Department of Social Services
- Anne Arundel County Mental Health Agency
- Department of Juvenile Services
- Anne Arundel County CASA
- Chesapeake Center for Youth Development
- Anne Arundel Community College

BECOME A MEMBER: LIST YOUR PROGRAMS FOR FREE

Contact us and become part of this collaborative effort — the ultimate benefit is that there is improved child and family well-being because connections are made to needed resources and gaps in services are appropriately identified.

Anne Arundel County's Human Service Resource Database

Representatives from government and non-profit organizations responsible for information & referral and systems-wide planning joined together to create an up-to-date, web-based inventory of services—**infoAnneArundel**.

The included services are provided by public and private organizations who work to meet the health, education and social service needs of Anne Arundel County's children, families and adults.

infoAnneArundel is used to provide **Information and Referrals** which effectively and efficiently link residents with needed services and supports.

Data from the website is also used to support **Community Needs Assessments**. By analyzing the types and distribution of resources, the County is better able to quantify gaps in services and plan for resource allocation.

Examples include:

- Out-of-School-Time Programs
- Support for Parents, Pregnant Women & Young Children
- Mental Health Programs & Support
- Programs for Juvenile Diversion
- Gang Prevention Resources
- Teen Pregnancy Prevention & Support
- Services for the Disabled
- Emergency & Financial Support Services
- Cultural Supports
- Programs that Support Physical Health & Well-being

www.infoannearundel.org

For more information contact: Anne Arundel County Partnership for Children, Youth & Families
Tel: 410-222-7423/ e-mail: admin@infoAnneArundel.org



Find Help and Information

infoAnneArundel provides information about how to connect to a human services professional who can help you access services quickly and confidentially.

It includes a detailed list of crisis hotline and

information and assistance numbers; tips on what you should know when looking for services; how to ask the right questions; and how an experienced and trained professional can help.



If you cannot find the local resources you need call :

Anne Arundel County Information and Referral Line

1-800-485-0041

Browse by Service

-  Arts, Culture and Recreation
-  Children & Youth
-  Community Services & Information
-  Education
-  Employment & Financial Assistance
-  Food, Housing & Household Items
-  Health Care & Medical Service
-  Immigrant Services & English Learners
-  Individual & Family-Centered Services
-  Legal Services & Advocacy
-  Mental Health & Counseling
-  Older Adults
-  Persons with Disabilities
-  Public Safety & Disaster Services
-  Public Works & Transportation

Multiple Ways to Find Services

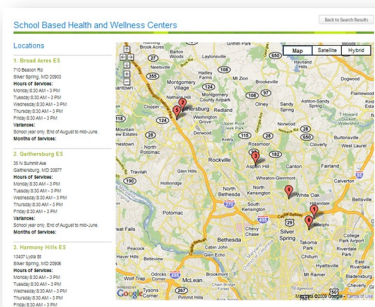
Services can be found on **infoAnneArundel** by browsing a set of service types or by searching on keywords and fields.

Browse by allows access to programs according to the services they provide, the population they serve, the organization running the program or the location.

Keyword search yields the most results by using the term entered to search a number of fields, including: program name, organization name, service name and definition.

Resource guides are an easy way to see a list of services on a particular topic or for a specific population. These guides serve as mini-directories and include a list of important phone numbers, relevant programs, featured resources, and sites with information about the topic.

Tools and Features



- ▶ Map multiple locations for any program.
- ▶ Narrow results: Visitors can filter results by service type, population served and location.
- ▶ Search tips and a user guide answer frequently asked questions.

Anne Arundel County Systems of Care

infoAnneArundel is the first tier of the Anne Arundel County Systems of Care: a multi-tiered approach to providing individualized information and support to connect children, youth and their families to appropriate resources in the community.

The second tier is the Systems of Care Information and Referral Line. A staffed phone line provides personal assistance to individuals seeking local resources. For families with multiple needs, individualized planning and home-based support is available.

Call 1-800-485-0041 Monday-Friday, 8:30am-5:00pm, for assistance.

The third tier of the Systems of Care is CRICT: Community Resource Initiative Care Team. CRICT is a forum staffed by representatives from local family-serving agencies who work with families with complex needs to develop an Individual Family Action Plan and to help them connect to community-based resources and services.